

# ALL-O-MATIC



**Power Door Products**  
(914) 698-5083  
www.PowerDoorProducts.com

allomatic.net

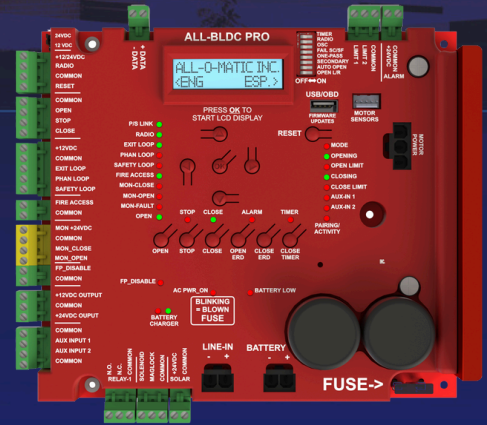
## SW-325DC PRO

SWING GATE OPERATOR

## ALL-BLDC PRO CONTROL BOARD

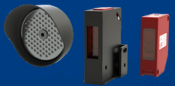


Shown with pad mount option SPD-320



### ALL-BLDC PRO FEATURES

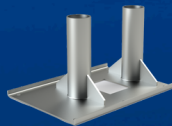
- ✓ LCD DISPLAY WITH ON BOARD DIAGNOSTICS
- ✓ AUTO CLOSE TIMER & OBSTRUCTION SENSING DIGITAL ADJUSTMENTS
- ✓ INTEGRATED WIRELESS PRIMARY/SECONDARY
- ✓ PARTIAL OPEN OPTION
- ✓ PROGRAMMABLE AUXILIARY INPUTS
- ✓ USB PORT TO EXTRACT DIAGNOSTIC DATA AND FIRMWARE UPDATES
- ✓ BUILT-IN VOLT METER THROUGH LCD DISPLAY
- ✓ CYCLE COUNTER AND MUCH MORE



**AOM-RED EYE**  
INCLUDED



**SPT-325**  
Post Mount



**SPD-320/325**  
Pad Mount



RESIDENTIAL



COMMERCIAL

**SLIDERS | SWINGERS | OVERHEADS**

The standard by which all other automatic gate operators are measured.

SCAN FOR  
PRODUCT  
INFORMATION



UL 325 2018  
COMPLIANT

UL 991  
COMPLIANT

CSA C22.2 #247

# ALL-O-MATIC



**Power Door Products**  
(914) 698-5083  
www.PowerDoorProducts.com

allomatic.net

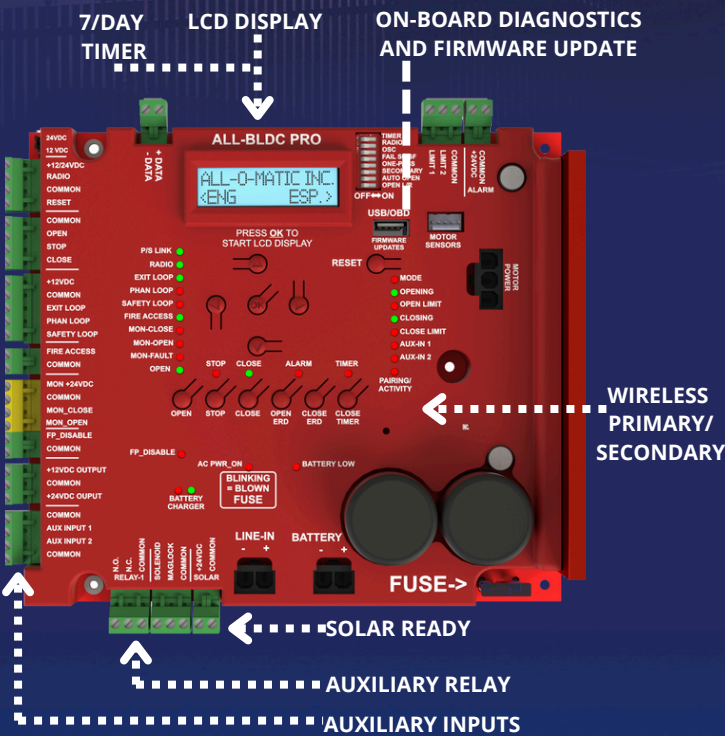


SCAN FOR  
PRODUCT  
INFORMATION

## SW-325DC PRO

### SWING GATE OPERATOR

## SPECS



- Max Gate Weight** 2,000 lbs.
- Max Gate Length** 20 feet
- Warranty** 7 year residential - 5 year commercial
- Motor** 24 VDC brushless – ½ HP motor
- Gate Speed** Adjustable 14-25 seconds per 90° opening
- Power Options** 115/230 VAC single phase and 24 VDC solar panel
- Duty Cycle** Continuous
- Battery Backup** Integrated, with (2) 7Ah 12VDC batteries
- Battery Backup Capacity** Up to 250 cycles
- Temperature Range** -40 to 160°
- Gearbox Ratio** 750:1 with internal clutch
- Width X Length X Height** 19" X 25.5" X 21"
- Shipping Weight** 160 lbs. + 30 lbs. arm
- Emergency Release** Easy slide quick release arm
- Breaker Requirement** 20 amp dedicated

← WIRELESS  
PRIMARY/  
SECONDARY

← SOLAR READY

← AUXILIARY RELAY

← AUXILIARY INPUTS



RESIDENTIAL



COMMERCIAL

### AVAILABLE ACCESSORIES



AML-1200B  
Mag Lock



GH-1500  
Hinges



Fire  
Boxes



24V  
Solar  
Panel



PRIME VD-1  
Loop Detector

The Warrantor warrants the SW-325DC PRO Gate Operator. ALL-O-MATIC INC warrants its gate openers for a period of five (5) years in commercial installations, and for a period of seven (7) years in residential installation to be free from defects in circuitry, motor, gear box and workmanship. This warranty applies from the date of purchase to the original owner. Warrantor will repair or, at its option, replace any device which it finds to require service. This device must be sent to the warrantor at the consumer's expense. The warrantor will return the repaired or replaced unit to the customer at the consumer's expense. Labor charges for dealer service or replacement are the responsibility of the owner. These warranties are in lieu of all other warranties either expressed or implied, and ALL-O-MATIC INC shall not be liable for consequential damage. All implied warranties of merchantability and or fitness for a particular purpose are hereby disclaimed and excluded. This limitation is not valid in jurisdictions which do not allow limitation of incidental or consequential damages or limitation of warranty periods. Caution in order to obtain this policy, please complete the registration card and send it by mail within 30 days of purchasing from ALL-O-MATIC INC. or your INSTALLER. If not registered only a one year warranty on all parts will be provided.

The standard by which all other automatic gate operators are measured.

UL 325 2018 COMPLIANT    UL 991 COMPLIANT

CSA C22.2 #247